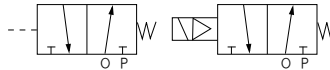


**W** 系列 截止式电磁换向阀  
Series poppet valves

**K23J-W** 系列截止式电磁换向阀  
series poppet valve 3/2-way



图形符号 symbols



产品特点 Features

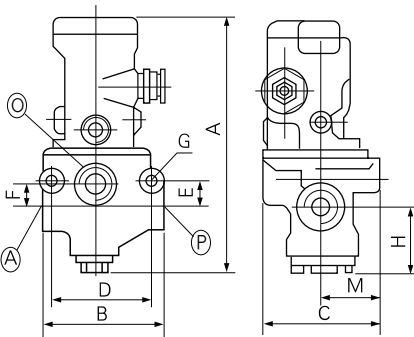
K23J-W系列是二位三通管接截止式换向阀。该阀结构合理，动作可靠，维修方便，尤其适用于较为恶劣的工作环境。分电控和气控两种。

K23J-W series is 3/2 way poppet valve for line Mounting. Streamlined structure, reliable action easy of maintenance, and especially suitable to tough work conditions. Two types: solenoid pilot control or Air remote pressure control

型号注释 Order Code



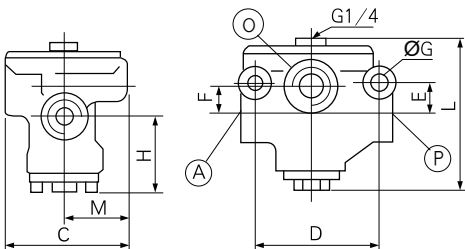
K	空气介质	Air medium
23	二位三通	3/2 ways
J	截止式	poppet valve
D-15	D单电控、K单气控	D: Single solenoid pilot control K: air head for remote pressure control
T	公称通径	Dia
W	常通(常闭无记号)	Normal open (Blank normal closed)
	W或WHT公司代号	W or WHT Company code



技术参数 Specification

型号 type	K23J-8WHT	K23J-10WHT	K23J-15WHT	K23J-20WHT	K23J-25WHT	K23J-32W	K23J-40W
流量 Flow rate(m³/h)	5	7	10	20	30	40	50
有效截面积S值 Effective sectional area(mm²)	20	35	60	120	190	300	400
泄漏量 Leakage rate(cm³/min)	≤50	≤100	≤200	≤300			
换向时间 Direction diverting time(sec)	≤0.04	≤0.06	≤0.10	≤0.15			
切换频率 Switch-over frequency Hz	≥10	≥8	≥4	≥3			
工作压力 Working pressure(MPa)	0.1-1						
电压 Voltage(V)	AC:380,220,110,36 DC:220,110,24						
工作温度 Working temp. (°C)	-5~50						

外形尺寸 Outlook & Dimension



型号 Type	公称通径 Dia	接管螺纹 Threads (英制)G	A	B	C	D	E	F	G	H	M	L	O
			K23J-8 (T) WHT	Ø8	G1/4								
K23J-10 (T) WHT	Ø10	G3/8	180	96	78	73	17	16.5	Ø9	45	39	85	G1/2
K23J-15 (T) WHT	Ø15	G1/2											
K23J-20 (T) WHT	Ø20	G3/4	195	113	89	82	24	21	Ø9	52	38	105	G1
K23J-25 (T) WHT	Ø25	G1											
K23J-32 (T) W	Ø32	G1¼	268	165	121	118	37	48	Ø13	75	46	170	G1½
K23J-40 (T) W	Ø40	G1½											